

LUTRONIC

enCurve

Apoptosis-inducing
Radiofrequency

CREATING GREAT CURVES



The Easy, Comfortable Way to Deliver Circumferential Reduction

The enCurve is the easy and comfortable way to reduce adipocytes through apoptosis-inducing radiofrequency. Working through controlled delivery of energy deep into the adipocytes, enCurve utilizes a specialized frequency (27.12 MHz) to selectively target and heat adipocytes to the optimal temperature to cause denaturation of cells, leading to adipocyte's death.

COMFORTABLE CONVENIENCE

What better way to provide care for patients than with a device which is not only easy for you to operate, but to be able to provide one that is relaxing and minimal pain for them. The easy to use touch screen interface combined with the ergonomic articulating arm has multiple joints that provide extended reach and the air flow head conforms to most body types.

Patients relax while enCurve works to reveal their curves, while you gain the profits.



WHY 27.12 MHZ IS THE MAGIC NUMBER

27.12 MHz frequency is more highly absorbed by adipocytes. As a result, adipocytes are more responsive than the cells in epidermis, dermis, or muscles, making this frequency ideally suited to precisely target the adipocytes. The apoptosis-inducing radiofrequency causes the adipocytes to vibrate or oscillate at a high rate which generates frictional energy (heat). The frictional energy leads to apoptosis of adipocytes.

WHY enCurve

- Easy to own and operate
- Perfect frequency that is effective at destroying adipocytes while protecting the epidermis and dermis
- Smart features allow for auto-adjustment of the power levels to minimize energy loss

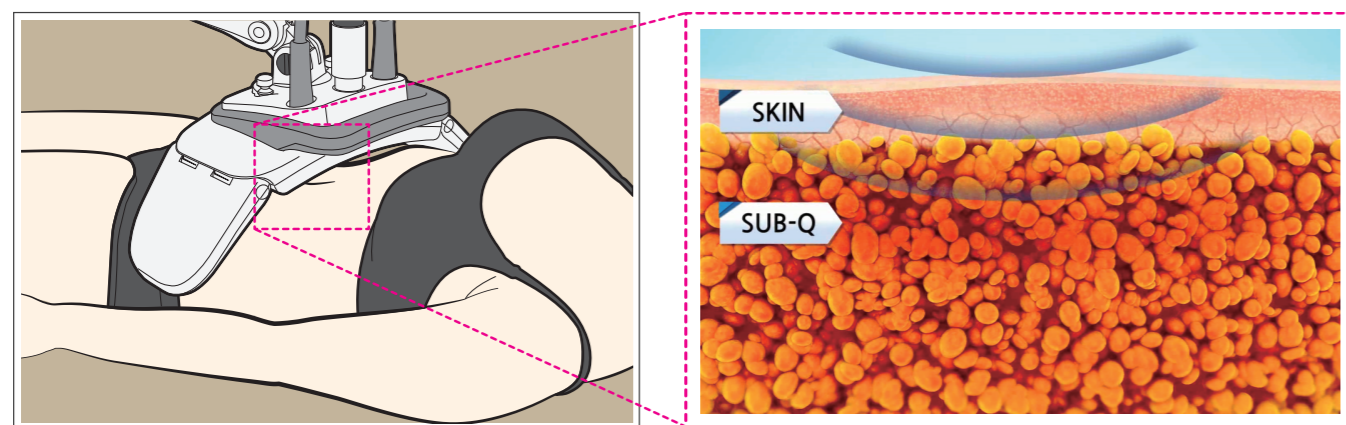
- No consumables
- Personalized Impedance Synchronization Application (PISA™) ensures the best possible treatment outcomes
- Safely leave patient unattended, knowing that Air Mode is working to eliminate sweat on tissue



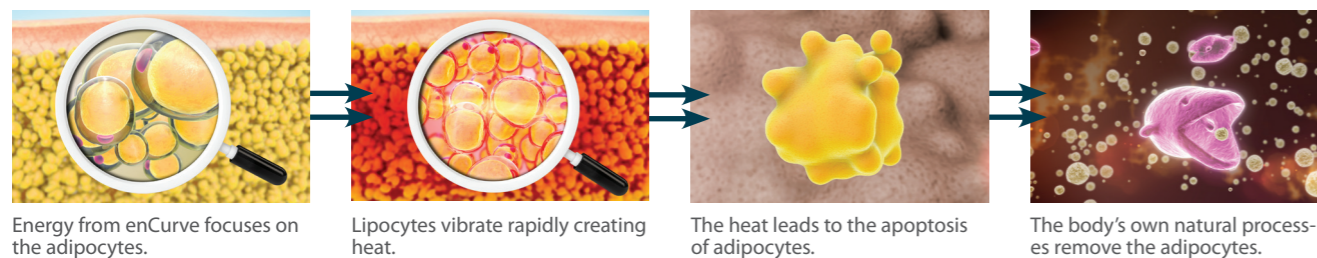
PROVIDE THE RESULTS YOUR PATIENTS DEMAND

HOW IT WORKS

The apoptosis-inducing radiofrequency penetrates deep into the tissue, targeting the adipocytes. The adipocytes are super excited and oscillate rapidly causing frictional heat. The frictional heat raises the adipocyte temperature to 45 degrees at which point the cells denaturize. This denaturation causes changes in the integrity of the adipocyte membrane, which leads to apoptosis (cell death), with expulsion of the intracellular lipid. The body's natural removal process then takes over, removing the damaged cells, permanently removing the cells.



Focused energy targets adipocytes.



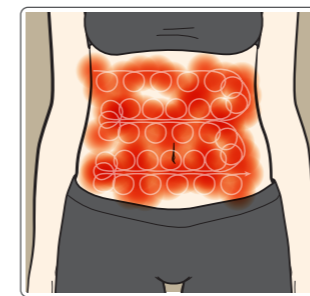
Energy from enCurve focuses on the adipocytes.

Lipocytes vibrate rapidly creating heat.

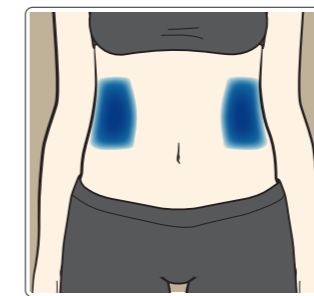
The heat leads to the apoptosis of adipocytes.

The body's own natural processes remove the adipocytes.

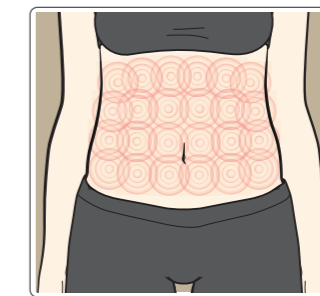
COMPARISON OF TREATMENT MODALITIES IN BODY CONTOURING



Traditional RF which requires manual rubbing



Cryolipolysis limited by the size and number of applicators used in a treatment

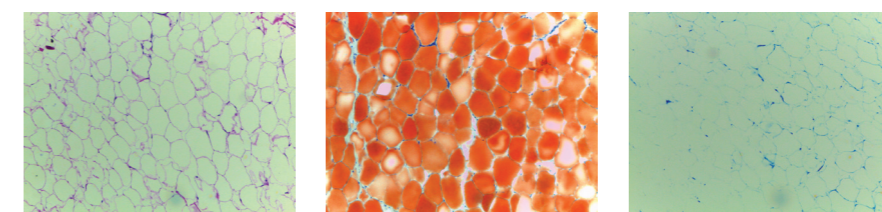


enCurve provides naturally full coverage

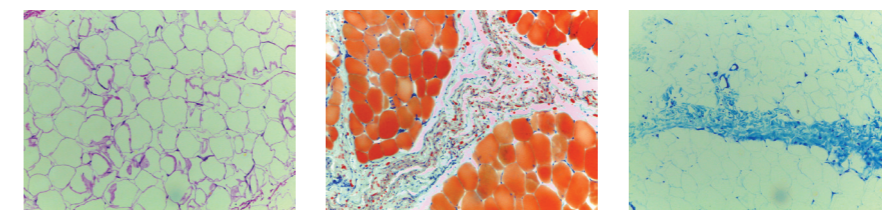
The enCurve safely and easily treats entire abdomen and waist line for a more natural appearance and full coverage, while most competitors do not.

ENCURVE EFFECTIVELY TARGETS AND DESTROYS ADIPOCYTES

BEFORE



1 WEEK AFTER 1 TX



H&E

Oil Red O

Toluidine Blue

Tissue stain on treated swine tissue, clearly show apoptosis of adipocytes after only a single 200 W 30 minute treatment.

Treatment Procedure is Easy

The applicator is placed over the area to be treated, the treatment is selected from the easy to operate touch screen GUI. Once the treatment begins the device measures the impedance of the tissue, and begins to tune to the adipose tissue. Device constantly adjusts energy delivery in order to ensure and maintain homogeneous heating of the tissue.

FEEL SECURE KNOWING:

- Personalized Impedance Synchronization Application (PISA™) ensures the best possible treatment outcomes
- Safely leave patient unattended, knowing that Air Mode is working to eliminate sweat on tissue for improved safety and comfort



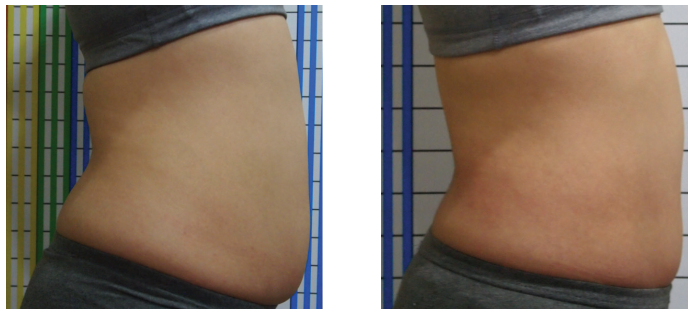
EXPERTS AGREE, ENCURVE PROVIDES AN ADVANTAGE



"The enCurve applicator can be positioned over both the abdomen and flanks at the same time, providing a hands-free procedure. EnCurve is a new generation of intelligent adipocyte-targeting systems to ensure great curves with maximum comfort for the patient, and minimum stress for the operator."

Dr. NARK-KYUNG RHO, Leaders Aesthetic Laser & Cosmetic Surgery Center, Korea

ENCURVE PROVIDES RESULTS YOU CAN SEE



Images Courtesy of Hyeyeon Kim, MD, South Korea

SPECIFICATIONS*

Laser Medium	Apoptosis-inducing Radiofrequency
Frequency	27.12 MHz
Output Power	Max. 300W
Applicator	Abdominal applicator

LUTRONIC CORPORATION

Lutronic Center, 219 Sowon-ro, Deogyang-gu, Goyang-si, Gyeonggi-do, KOREA
TEL. +82 31 908 3440 / FAX. +82 1600 3660
e-mail. office@lutronic.com

LUTRONIC AESTHETIC, INC.

1 North Avenue, Ste. C, Burlington, MA 01803, USA
TEL. +1 888 588 7644

LUTRONIC JAPAN CO., LTD.

9F Hakataekimae Center Bldg., 1-14-16 Hakataekimae, Hakata-ku,
Fukuoka city, Fukuoka-pref., 812-0011, JAPAN
TEL. +81 92 477 2755 / FAX. +81 92 477 2756

LUTRONIC CHINA

A-28F, Posco Center, Hongtai Dong jie, Dawangjing Science Business Park, Chaoyang
District, Beijing, CHINA
TEL. +86 10 8453 8551

lutronic.com

©2016, LUTRONIC Group of Companies. All rights reserved. LUTRONIC, its logo, and enCurve are trademarks or registered trademarks of the LUTRONIC Group of Companies. This product or the use of this product is covered by one or more US and foreign patents or patent application pending. *System or Handpiece designs and specifications are subject to change without notice. LUTRONIC-BR-4100160500 Rev. 1.3
For International Use Only.

LUTRONIC